



OVERLOAD RELAY 18...25 A FOR MOTOR PROTECTION
 SIZE S3,
 CLASS 10 FOR CONTACTOR MOUNTING MAIN CIRCUIT:
 SCREW CONN. AUX. CIRCUIT: SCREW CONN. MANUAL-
 AUTOMATIC-RESET

General technical details:

| | | |
|--|----|------------------------|
| product brand name | | SIRIUS |
| product designation | | thermal overload relay |
| Protection class IP / on the front | | IP20 |
| Insulation voltage / with degree of pollution 3 / rated value | V | 1,000 |
| Installation altitude / at a height over sea level / maximum | m | 2,000 |
| Ambient temperature | | |
| • during operating | °C | -20 ... +70 |
| • during storage | °C | -55 ... +80 |
| • during transport | °C | -55 ... +80 |
| Relative humidity / during operating phase / maximum | % | 100 |
| Resistance against shock | | 8g / 10 ms |
| Impulse voltage resistance / rated value | kV | 8 |
| Active power loss / total / typical | W | 16.5 |
| Item designation | | |
| • according to DIN 40719 extendable after IEC 204-2 / according to IEC 750 | | F |
| • according to DIN EN 61346-2 | | F |
| Operating current / of the fuse link / rated value | A | 63 |
| Trip class | | CLASS 10 |

| | | |
|--|--|-------------------|
| Type of assignment | | 2 |
| type of protection | | DMT 98 ATEX G 001 |
| Size of overload relay | | S3 |
| Size of the contactor / can be combined / company-specific | | S3 |
| Protection against electrical shock | | finger-safe |

Main circuit:

| | | |
|---|----|-----------|
| Number of poles / for main current circuit | | 3 |
| Operating voltage / at AC-3 / rated value | | |
| • maximum | V | 1,000 |
| Service power / at AC-3 | | |
| • at 400 V | kW | 11 |
| Adjustable response current | | |
| • of the current-dependent overload release | A | 18 ... 25 |

Auxiliary circuit:

| | | |
|--|---|--|
| Contact reliability / of the auxiliary contacts | | acceptability for PLC control (17 V, 5 mA) |
| Number of NC contacts | | 1 |
| Number of NO contacts | | 1 |
| Number of change-over switches | | 0 |
| Operating current / of the auxiliary contacts / at AC-15 | | |
| • at 24 V | A | 3 |
| • at 110 V | A | 3 |
| • at 120 V | A | 3 |
| • at 125 V | A | 3 |
| • at 230 V | A | 2 |
| • at 400 V | A | 1 |
| Operating current / of the auxiliary contacts / at DC-13 | | |
| • at 24 V | A | 1 |
| • at 110 V | A | 0.22 |
| • at 125 V | A | 0.22 |
| • at 220 V | A | 0.11 |

Short-circuit:

| | | |
|---|--|------------------------------|
| Design of the fuse link / for short-circuit protection of the auxiliary switch / required | | fuse gL/gG: 6 A, quick: 10 A |
|---|--|------------------------------|

Installation/mounting/dimensions:

| | | |
|----------------------|--|---|
| Built in orientation | | with vertical mounting surface +/-135° rotatable, with vertical mounting surface +/- 45° tiltable to the front and back |
| Type of mounting | | direct mounting |

| | | |
|--|----|-----|
| Height | mm | 120 |
| Width | mm | 70 |
| Depth | mm | 140 |
| Distance, to be maintained, to the ranks assembly | | |
| • upwards | mm | 0 |
| • downwards | mm | 0 |
| • forwards | mm | 0 |
| • backwards | mm | 0 |
| • sideways | mm | 0 |
| Distance, to be maintained, to earthed part | | |
| • upwards | mm | 0 |
| • downwards | mm | 0 |
| • forwards | mm | 0 |
| • backwards | mm | 0 |
| • sideways | mm | 6 |
| Distance, to be maintained, conductive elements | | |
| • upwards | mm | 0 |
| • downwards | mm | 0 |
| • forwards | mm | 0 |
| • backwards | mm | 0 |
| • sideways | mm | 6 |

Connection type:

| | | |
|--|--|---|
| Product function | | |
| • removable terminal for auxiliary and control circuit | | No |
| Design of the electrical connection | | |
| • for main current circuit | | screw-type terminals |
| • for auxiliary and control current circuit | | screw-type terminals |
| Type of the connectable conductor cross-section | | |
| • for main contacts | | |
| • solid | | 2x (2.5 ... 16 mm ²) |
| • stranded | | 2x (10 ... 50 mm ²), 10 ... 70 mm ² |
| • finely stranded | | |
| • with conductor end processing | | 2x (2.5 ... 35 mm ²), 2.5 ... 50 mm ² |
| • for auxiliary contacts | | |
| • solid | | 2x (0.5 ... 1.5 mm ²), 2x (0.75 ... 2.5 mm ²) |
| • finely stranded | | |
| • with conductor end processing | | 2x (0.5 ... 1.5 mm ²), 2x (0.75 ... 2.5 mm ²) |
| • for AWG conductors | | |
| • for main contacts | | 2x (10 ... 1/0), 1x (10 ... 2/0) |

| | | |
|--|-----------------|--------------------------------|
| • for auxiliary contacts | | 2x (20 ... 16), 2x (18 ... 14) |
| Conductor cross section that can be connected | | |
| • for main contacts | | |
| • solid | mm ² | 2.5 ... 6 |
| • stranded | mm ² | 10 ... 70 |
| • stranded wire | | |
| • with conductor end processing | mm ² | 2.5 ... 50 |
| • for auxiliary contact | | |
| • solid | mm ² | 0.5 ... 2.5 |
| • stranded wire | | |
| • with conductor end processing | mm ² | 0.5 ... 2.5 |
| AWG number / as coded connectable conductor cross-section | | |
| • for main contacts / minimum | | 10 |
| • for auxiliary contact | | 20 ... 14 |

Certificates/approvals:

| | | |
|------------------------------------|--|---|
| Verification of suitability | | CSA / UL / CC / GL / LRS / BV / DNV / RMRS / RINA / PRS / ABS |
|------------------------------------|--|---|

| | | |
|---|--|-----|
| Verification of suitability / ATEX | | Yes |
|---|--|-----|

| | | |
|---------------------------------|---------------------------------------|--------------------------|
| General Product Approval | For use in hazardous locations | Test Certificates |
|---------------------------------|---------------------------------------|--------------------------|



[ROSTEST](#)



[DEKRA EXAM, DMT](#)

[Manufacturer](#)

Shipping Approval



Shipping Approval other



[Manufacturer](#)

Further information:

Information- and Downloadcenter (Catalogs, Brochures,...)

<http://www.siemens.com/industrial-controls/catalogs>

Industry Mall (Online ordering system)

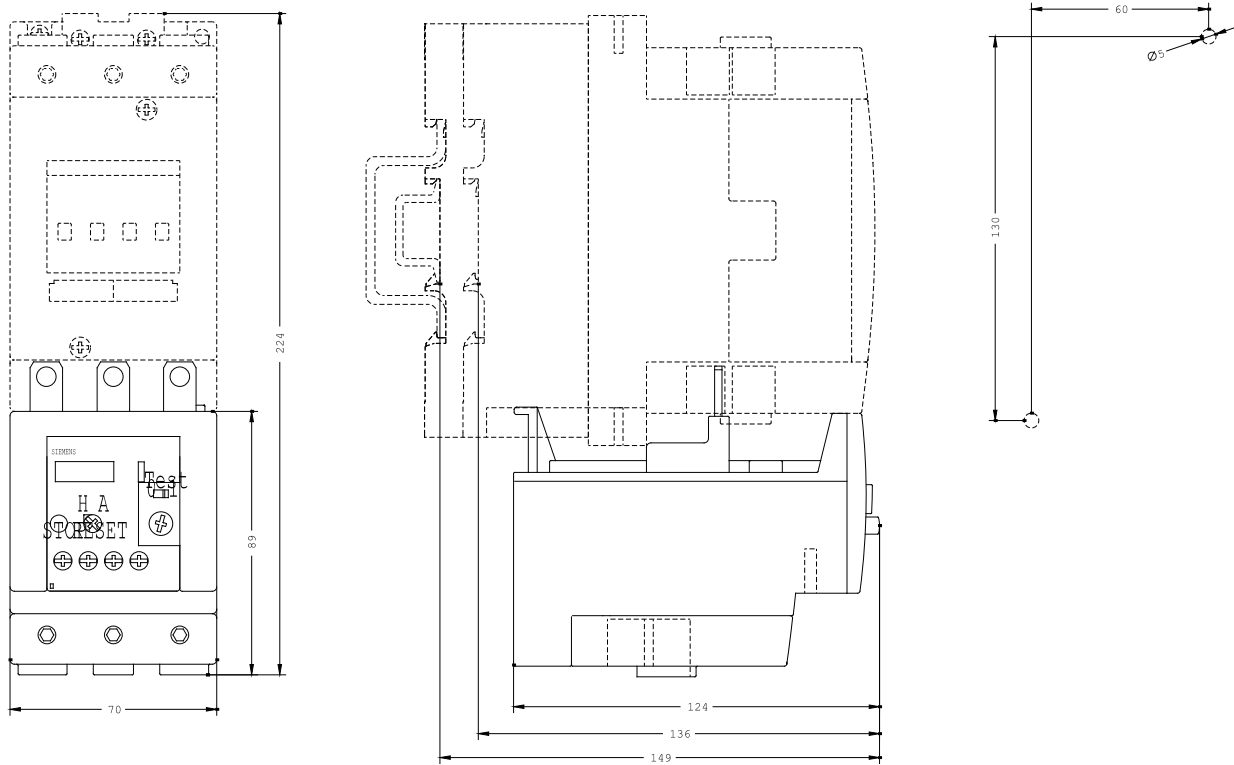
<http://www.siemens.com/industrial-controls/mall>

CAX-Online-Generator

<http://www.siemens.com/cax>

Service&Support (Manuals, Certificates, Characteristics, FAQs,...)

<http://support.automation.siemens.com/WW/view/en/3RU1146-4DB0/all>



last change:

Mar 5, 2012